

# Professional Compact Size & Operational ROV Platform

High-performance & Multi-faceted Underwater Productivity Tool

## FIFISH V6 EXPERT

FIFISH V6 EXPERT is a professional-class underwater robot and a multi-capable tool built to enhance your underwater missions and operations. The V6 EXPERT can be equipped with a myriad of accessories as well as an onshore power supply system, delivering optimal performance and diving time for your expeditions.

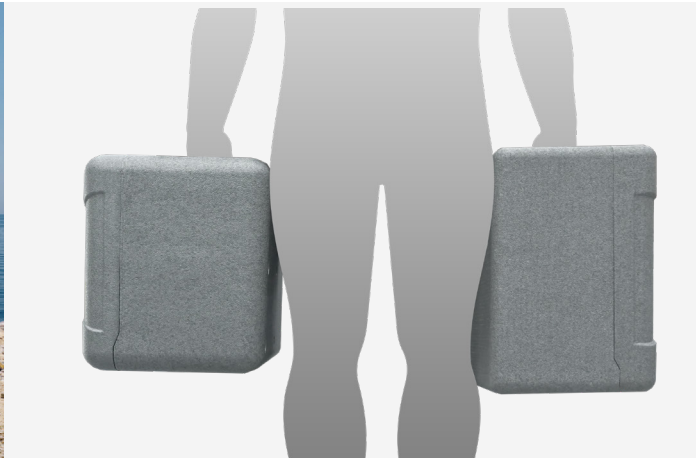
<b>100m</b> Max. Depth	<b>3 Knots</b> Max. Speed	<b>-10~60°C</b> Temp. Range	<b>1.5 Hrs</b> (In 1 m/s Current) <b>6 Hrs</b> (In Still Waters)
---------------------------	------------------------------	--------------------------------	---

### Lasting Power, High Performance & Secure Reliability

Seamless and efficient deployment of the ROV and a portable power supply system for lasting and uninterrupted dive sessions.



Quick and simple installation for a continuous workflow



Easy to carry, deploy, operate and maintain

### Streamlined Design & Robust Build

<p><b>Patented Q-MOTOR</b></p> <p><b>Built to Last</b> Protection Against Corrosion and Sand Damage</p>	<p><b>Patented 360° Omnidirectional Mobility</b></p> <p>Complete freedom of movement in the subaquatic world</p>	<p><b>Patented Q-STEADY 2.0</b></p> <p>Introducing the FIFISH's latest Q-STEADY 2.0 Stabilization System, delivering ultra-smooth and steady footage no matter where your challenging missions take you.</p> <p><b>Efficient in Currents</b></p> <p>A Streamlined design for minimum water resistance and enhanced power efficiency, the V6 EXPERT delivers a continuous flow of work for 1.5 hours even against currents of 1m/s.</p>
---	--	--

### 4K Low Noise Shooting for Cinematic Clarity

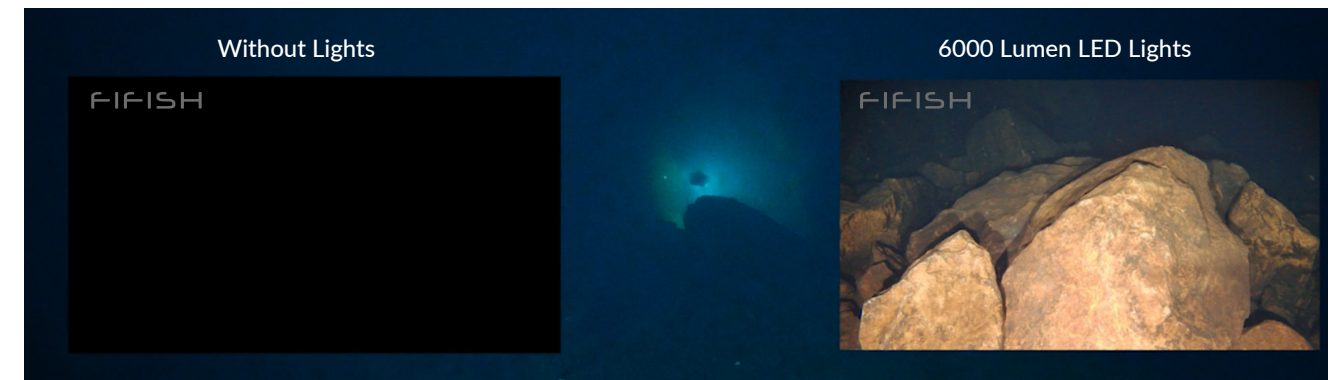
The FIFISH V6 EXPERT comes equipped with a UHD 4K underwater camera lens, alongside a 166° ultra-wide field of view, 12-megapixel resolution, 240 FPS slow-motion filming capabilities, and much more. V6 EXPERT's vision enhancement algorithms bring out the vibrancy of the underwater environment, so you can capture every detail needed in your aquatic operations and missions.



<b>DNG</b> DNG Format Support	<b>12 Megapixel Resolution</b>	<b>F2.5</b> f/2.5 Aperture	<b>166°</b> 166° Field of View	<b>240 FPS Slo-mo Filming</b>	<b>4K</b> 4K Ultra HD Video Quality
----------------------------------	--------------------------------	-------------------------------	-----------------------------------	-------------------------------	--

### Enhanced Lighting for Optimal Clarity

The FIFISH V6 EXPERT comes equipped with a pair of ultra-bright 6000 lumen LED lights alongside its 4K UHD camera, delivering brilliant, vivid, and vibrant images and footage within even the darkest spaces.



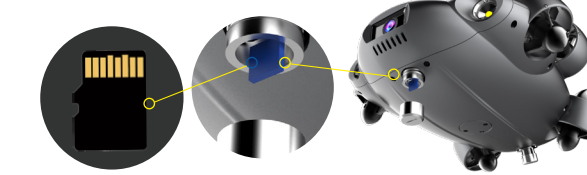
### VR Intelligent Head Tracking

FIFISH V6 EXPERT applies unique sensory controls that provide the user with a truly immersive underwater experience from the ROV's first-person perspective. Through the smart VR goggles, take the **QYSEA patented** full 360° directional and posture control of the drone simply by rotating the head. This intelligent feature is accurate, easy to use, and a breakthrough in underwater exploration.



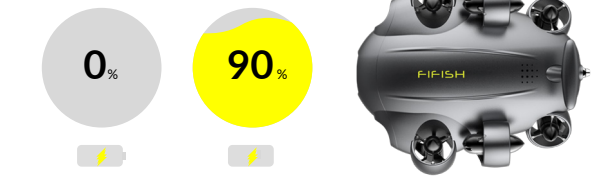
### Built-in SD Card Slot Efficient Storage & Transfer

With a built-in memory slot, the microSD card can be easily inserted and removed from the FIFISH V6 EXPERT to transfer videos and images. The V6 EXPERT ROV and its packages come standard with a 128GB memory card, delivering ample storage space for high-definition films and visuals.



### Powerful Battery Quick Charge Enabled

The V6 EXPERT comes equipped with a 14400mAh super-capacity battery, delivering long-lasting battery life, quick charging capabilities, as well as multiple safety and security mechanisms.



Q-CHARGE: Fast charge to 90% capacity within 1 hr.

### Light & Portable for Worry-free Travel

FIFISH V6 EXPERT delivers an organized and worry-free experience for your underwater operations. Its compact and rugged design allows for easy transportation to wherever your tasks and missions take you. The efficient power system, alongside power-enhancing add-ons, deliver continuous and uninterrupted dives for the FIFISH operator.



**EPP Case Specifications:**  
Length: 728mm  
Width: 470mm  
Height: 272.5mm

**V6 EXPERT M100 Standard Accessories**

Portable & Light EPP Case	V6 EXPERT ROV	100m Tether & Spool
Spare Propellers	ROV & RC Charger	Controller
		VR Goggles

### FIFISH V6 EXPERT PACKAGES

SKU	M100	M100A	M200	M200A	MP200	EP300
Cable Length	100m	100m	200m	200m	200m+100m	300m+100m
Spool	Manual Spool *1	Manual Spool *1	Manual Spool *1	Manual Spool *1	Manual Spool *2	E-Spool *1 Manual Spool *1
Packaging	EPP Box *1	Industrial Case *1	Industrial Case *1	Industrial Case *1	EPP Box *2	Industrial Case *1 EPP Box *1
OPSS	x	x	x	x	✓	✓
Robotic Arm (w/ Grippers)	x	✓	x	✓	x	x